

ATTACHMENT A

LIVERPOOL STREET

ELIZABETH STREET



CLARKE STREET

130 Elizabeth Street, Sydney
Hyde Development Nominees Pty Ltd
High Tower Plan
Level 34 Plan

Scale:	1:100 @ A1 (1:200 @ A3)
Drawn:	MK Checked AD
Project No.:	S11733
Status:	Amended Development Application
PKT Date:	3/7/2015 3:25:14PM
PKT File:	S:\1733\1733\1733_cour_130Elizabeth00_metric.dwg
Drawing No.:	DA03.234 [B] (Revision)

Melbourne 1 Nicholson Street
Melbourne VIC 3000 Australia
T 03 8664 6200 F 03 8664 6300
email: info@bates-smart.com.au
http://www.bates-smart.com.au

Sydney 43 Brisbane Street
Sydney NSW 2010 Australia
T 02 8354 5100 F 02 8354 5199
email: syd@bates-smart.com.au
http://www.bates-smart.com.au

Bates Smart Architects Pty Ltd ABN 68 094 740 986

PRELIMINARY
NOT FOR CONSTRUCTION

Revision	Date	Description	Initial	Checked
B	02.07.15	Amended DA	MK	AD
A	19.12.14	Development Application	KW	AD/DT

Check all dimensions and site conditions prior to commencement of any work, the purchase or ordering of any materials, fittings, fixtures or equipment and the preparation of any drawings and/or the fabrication of any components.
All drawings to be made in accordance with all relevant documents and all other constraints documents.
Do not refer to drawings made for other than this project. Any alterations to drawings shall be referred to the architect for details.
All drawings may not be reproduced or distributed without prior permission from the architect.



DA03.234[B]

BATESSMART

ATTACHMENT A

LIVERPOOL STREET

ELIZABETH STREET



CLARKE STREET

130 Elizabeth Street, Sydney
Hyde Development Nominees Pty Ltd
High Tower Plan
Level 35 Plan

Scale:	1:100 @ A1 (1:200 @ A3)
Drawn:	MK Checked AD
Project No.:	S11733
Status:	Amended Development Application
Plot Date:	3/7/2015 3:52:03 PM
Plot File:	S:\1733\1733\1733_cour_130Elizabeth00_mstricad\pkh... -DA03.235[5].dwg
Drawn/No.:	[Revision]

Melbourne 1 Nicholson Street
Melbourne VIC 3000 Australia
T 03 8664 6200 F 03 8664 6300
email: info@bates-smart.com.au
http://www.bates-smart.com.au

Sydney 43 Brisbane Street
Sydney NSW 2010 Australia
T 02 8354 5100 F 02 8354 5199
email: syd@bates-smart.com.au
http://www.bates-smart.com.au

Bates Smart Architects Pty Ltd ABN 66 094 740 986



DA03.235[B]

BATESSMART

PRELIMINARY
NOT FOR CONSTRUCTION

Revision	Date	Description	Initial	Checked
B	02.07.15	Amended DA	MK	AD
A	19.12.14	Development Application	KW	AD/DT

Check all dimensions and site conditions prior to commencement of any work, the purchase or ordering of any materials, fixtures, fittings, services or equipment and the preparation of any drawings and/or the fabrication of any components.
All drawings to be made in accordance with all relevant documents and all other constraints documents.
Do not rely on drawings for quantities or dimensions only. Any dimensions on drawings shall be referred to the architect for clarification.
All drawings may not be reproduced or distributed without prior permission from the architect.

ATTACHMENT A

LIVERPOOL STREET

ELIZABETH STREET



CLARKE STREET

130 Elizabeth Street, Sydney
Hyde Development Nominees Pty Ltd
High Tower Plan
Level 36 Plan

Scale: 1:100 @ A1 (1:200 @ A3)
 Drawn: MK Checked: AD
 Project No.: S11733
 Status: Amended Development Application
 Plot Date: 3/7/2015 3:52:14 PM
 Plot File: S:\1733\1733\1733_cour_130Elizabeth00_metric.dwg
 Drawing No.: DA03.236[B] (Revision)

Melbourne 1 Nicholson Street
Melbourne VIC 3000 Australia
T 03 8664 6200 F 03 8664 6300
email: info@bates-smart.com.au
http://www.bates-smart.com.au

Sydney 43 Brisbane Street
Sydney NSW 2010 Australia
T 02 8354 5100 F 02 8354 5199
email: syd@bates-smart.com.au
http://www.bates-smart.com.au

Bates Smart Architects Pty Ltd ABN 66 094 740 986

PRELIMINARY
NOT FOR CONSTRUCTION

Revision	Date	Description	Initial	Checked
B	02.07.15	Amended DA	MK	AD
A	19.12.14	Development Application	KW	AD/DT

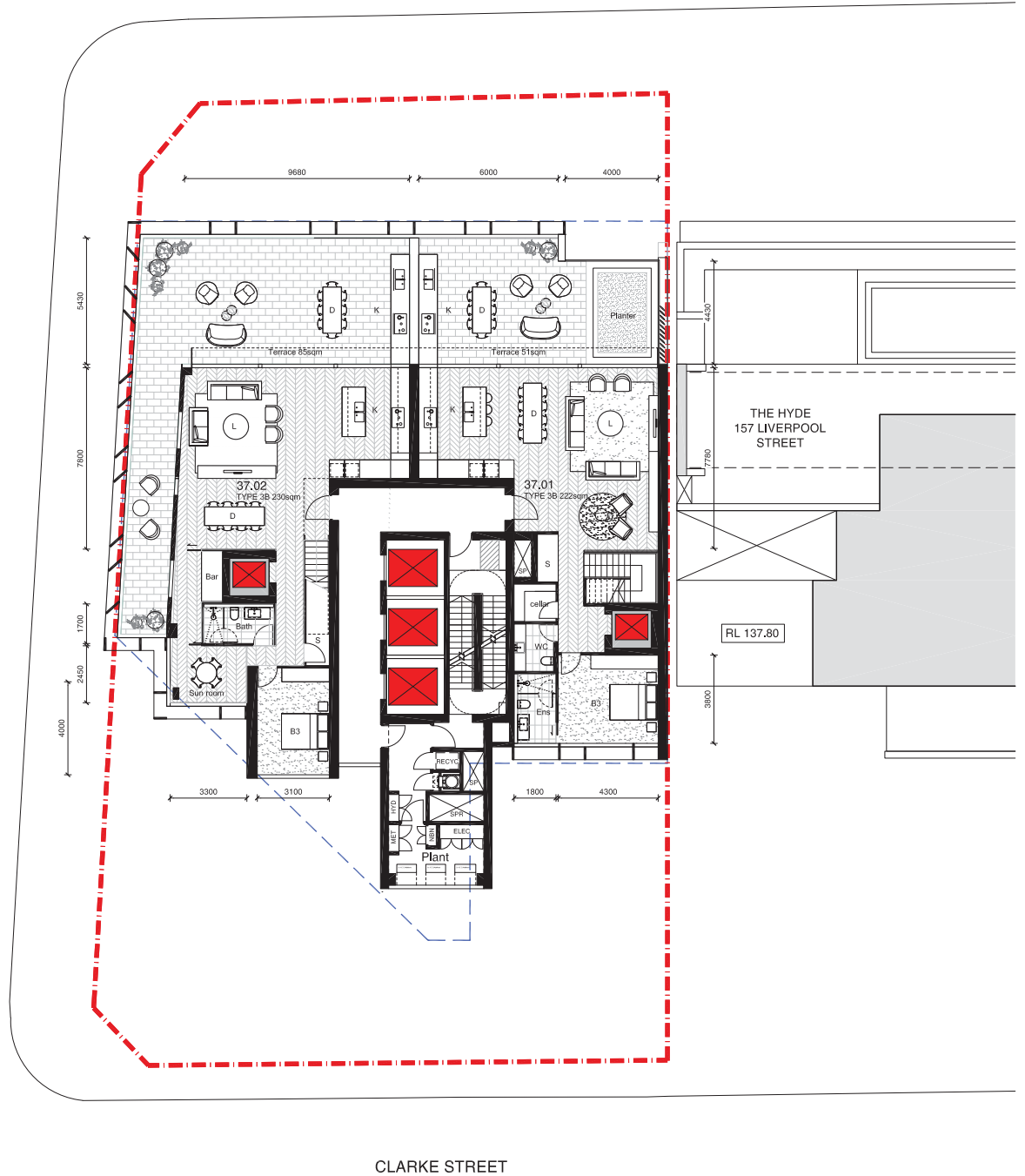
Check all dimensions and site conditions prior to commencement of any work, the purchase or ordering of any materials, fixtures, fittings, services or equipment and the preparation of any drawings and/or the fabrication of any components.
 All drawings to be made in accordance with all relevant documents and all other constraints documents.
 Do not refer to drawings made for other than this project. Any alterations to drawings shall be referred to the architect for details.
 All drawings may not be reproduced or distributed without prior permission from the architect.



ATTACHMENT A

LIVERPOOL STREET

ELIZABETH STREET



CLARKE STREET

130 Elizabeth Street, Sydney
Hyde Development Nominees Pty Ltd
Penthouse
Level 37 Plan

Scale:	1:100 @ A1 (1:200 @ A3)
Drawn:	MK Checked AD
Project No.:	S11733
Status:	Amended Development Application
Plot Date:	3/7/2015 3:46:43 PM
Plot File:	S:\11733\11733\11733_cdwg_130Elizabeth00_mechanical.k... -DA03.237.dwg
Drawing No.:	DA03.237[B] (Revision)

Melbourne 1 Nicholson Street
Melbourne VIC 3000 Australia
T 03 8664 6200 F 03 8664 6300
email: info@batesmart.com.au
http://www.batesmart.com.au

Sydney 43 Brisbane Street
Sydney NSW 2010 Australia
T 02 8354 5100 F 02 8354 5199
email: syd@batesmart.com.au
http://www.batesmart.com.au

Bates Smart Architects Pty Ltd ABN 68 094 740 986

PRELIMINARY
NOT FOR CONSTRUCTION

Revision	Date	Description	Initial	Checked
B	02.07.15	Amended DA	MK	AD
A	19.12.14	Development Application	KW	AD/DT

Check all dimensions and site conditions prior to commencement of any work. The purchaser or owner of any assets, buildings, sites, services or equipment and the approval of this drawing and the liability of any contractor.
All drawings to be made in accordance with all relevant documents and all other constraints documents.
Do not use drawings for any other purpose. Any alteration to drawings shall be referred to the architect for confirmation.
All drawings may not be reproduced or distributed without prior permission from the architect.

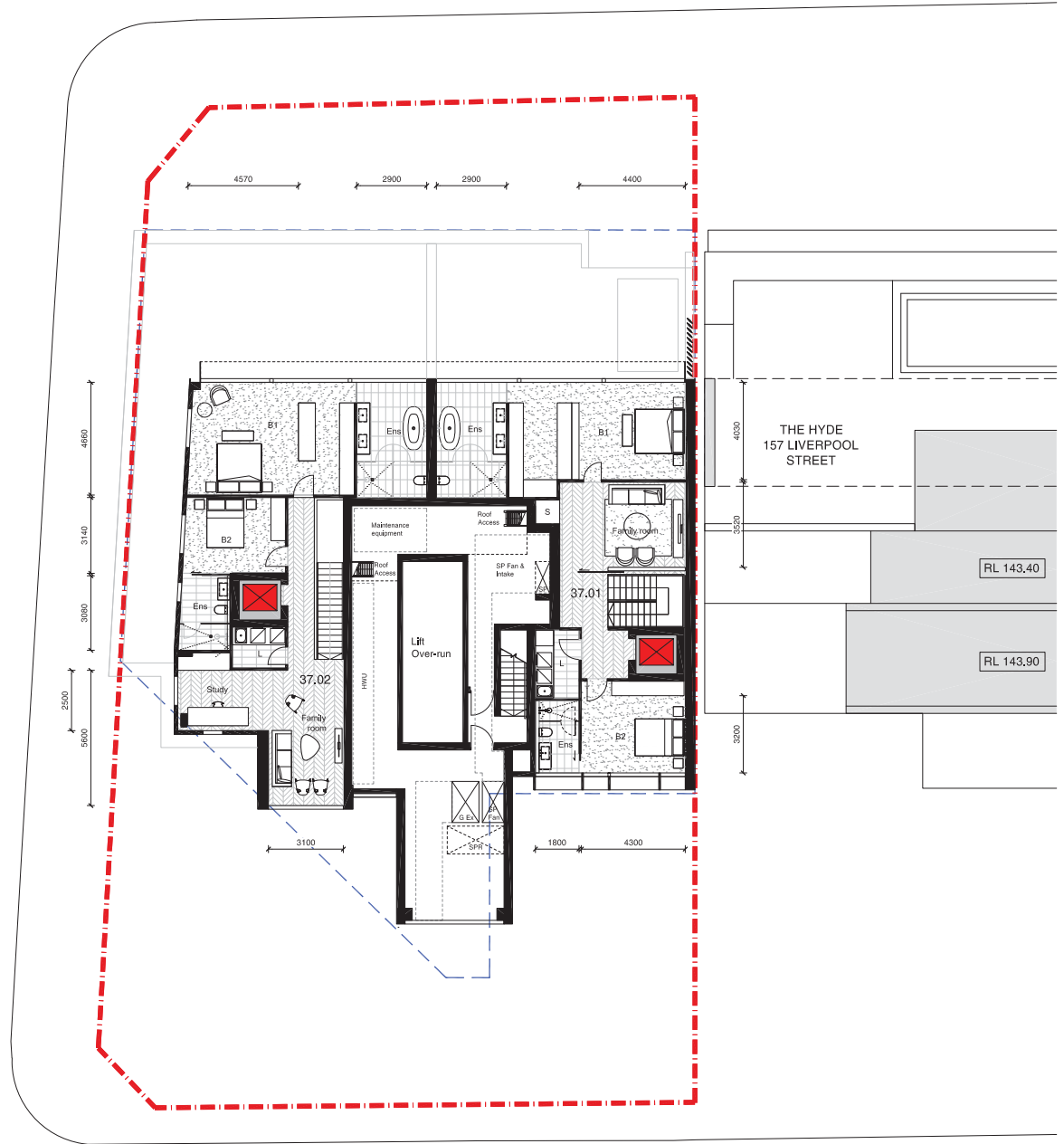


BATESSMART

ATTACHMENT A

LIVERPOOL STREET

ELIZABETH STREET



CLARKE STREET

130 Elizabeth Street, Sydney
Hyde Development Nominees Pty Ltd
Penthouse
Level 38 Plan

Scale: 1:100 @ A1 (1:200 @ A3)
 Drawn: MK Checked: AD
 Project No.: S11733
 Status: Amended Development Application
 Plot Date: 3/7/2015 3:46:52 PM
 Plot File: S:\11733\11733\11733_Cover_1304\BatesMK00_metric.dwg
 Drawing No.: **DA03.238[8]** (Revision)

Melbourne 1 Nicholson Street
Melbourne VIC 3000 Australia
T 03 8664 6200 F 03 8664 6300
email: info@bates-smart.com.au
http://www.bates-smart.com.au

Sydney 43 Brisbane Street
Sydney NSW 2010 Australia
T 02 8354 5100 F 02 8354 5199
email: syd@bates-smart.com.au
http://www.bates-smart.com.au

Bates Smart Architects Pty Ltd ABN 66 094 740 986

Revision	Date	Description	Initial	Checked
B	02.07.15	Amended DA	MK	AD
A	19.12.14	Development Application	KW	AD/DT

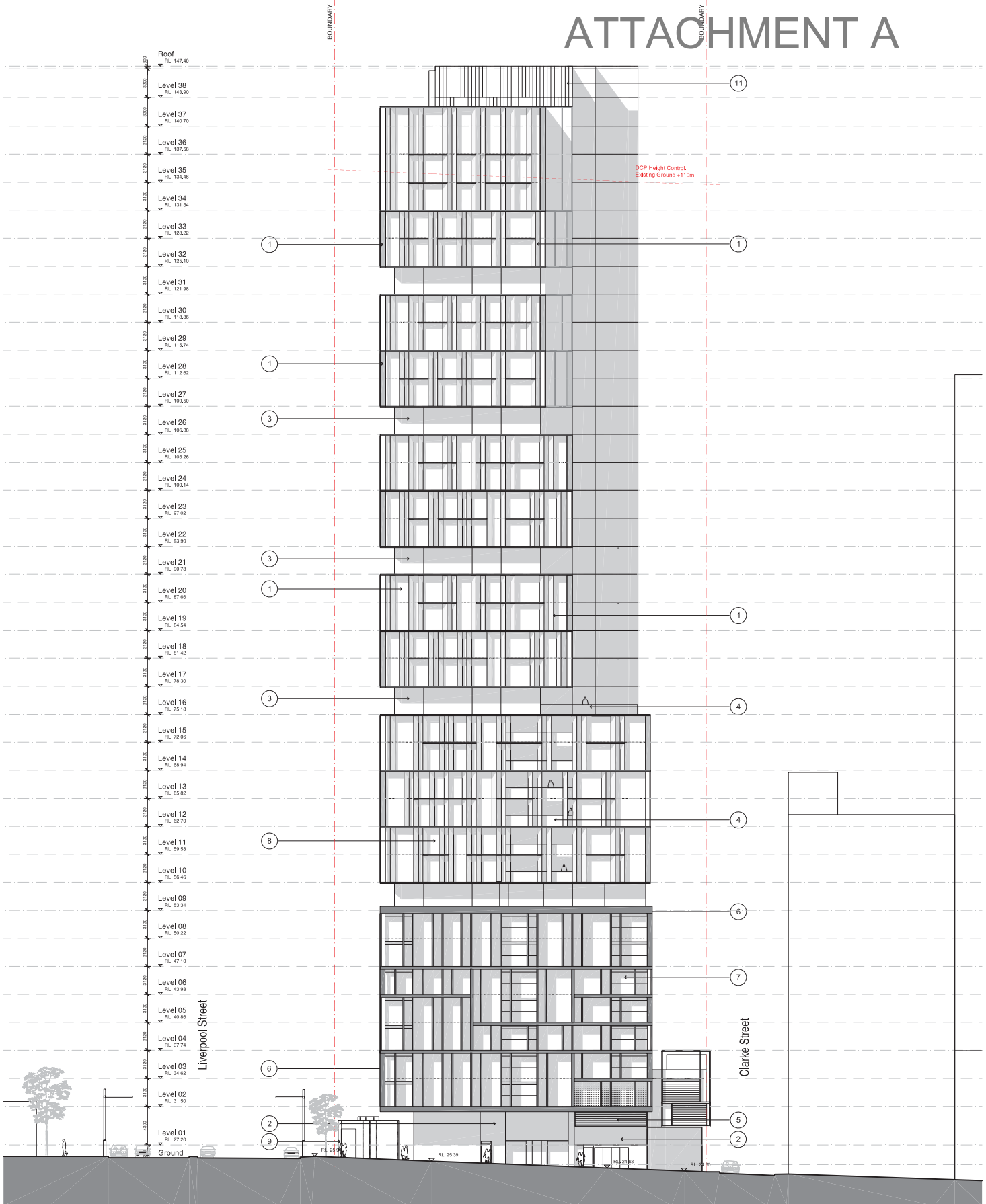
Check all dimensions and site conditions prior to commencement of any work, the purchase or ordering of any materials. Make site checks to confirm and the approval of this drawing and the satisfaction of all conditions.
 All drawings to be made in accordance with all relevant documents and all other constraints documents.
 Do not scale drawings made for Bates Smart Pty Ltd. Any dimensions on all drawings to be referred to the architect for clarification.
 All drawings may not be reproduced or distributed without prior permission from the architect.



PRELIMINARY
NOT FOR CONSTRUCTION

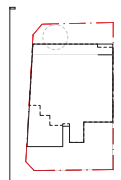
BATESSMART

ATTACHMENT A



1. Aluminium Sun Shading 2. Glazed White Brick 3. Frameless Glass / Curtain Wall Glazing 4. Glass Balustrades 5. Metal Louvers 6. Glazed White Precast Masonry 7. Sliding Glass Panels / Wintergardens 8. Sliding Sash Windows 9. Structural Glass 10. Colour Backed Glass 11. Zinc Cladding

PRELIMINARY
NOT FOR CONSTRUCTION



Revision	Date	Description	Initial	Checked
B	02.07.15	Amended DA	AL	AD
A	19.12.14	Development Application	WM	ADD/T

130 Elizabeth Street, Sydney
Hyde Development Nominees Pty Ltd
West Elevation
Elizabeth Street

Scale:	1:200 @ A1 (1:400 @ A3)
Drawn:	AL Checked AD
Project No.:	S11733
Status:	Amended Development Application
Plot Date:	3/7/2015 3:47:33 PM
Plot File:	S:\171004\17004\171733\Draw_130Elizabeth00_metric.dwg -DWG- 2015.dwg
Drawing No.:	DA07.002[B] (Revision)

Melbourne 1 Nicholson Street
Melbourne VIC 3000 Australia
T 03 8664 6200 F 03 8664 6300
email melli@batesmart.com.au
http://www.batesmart.com.au

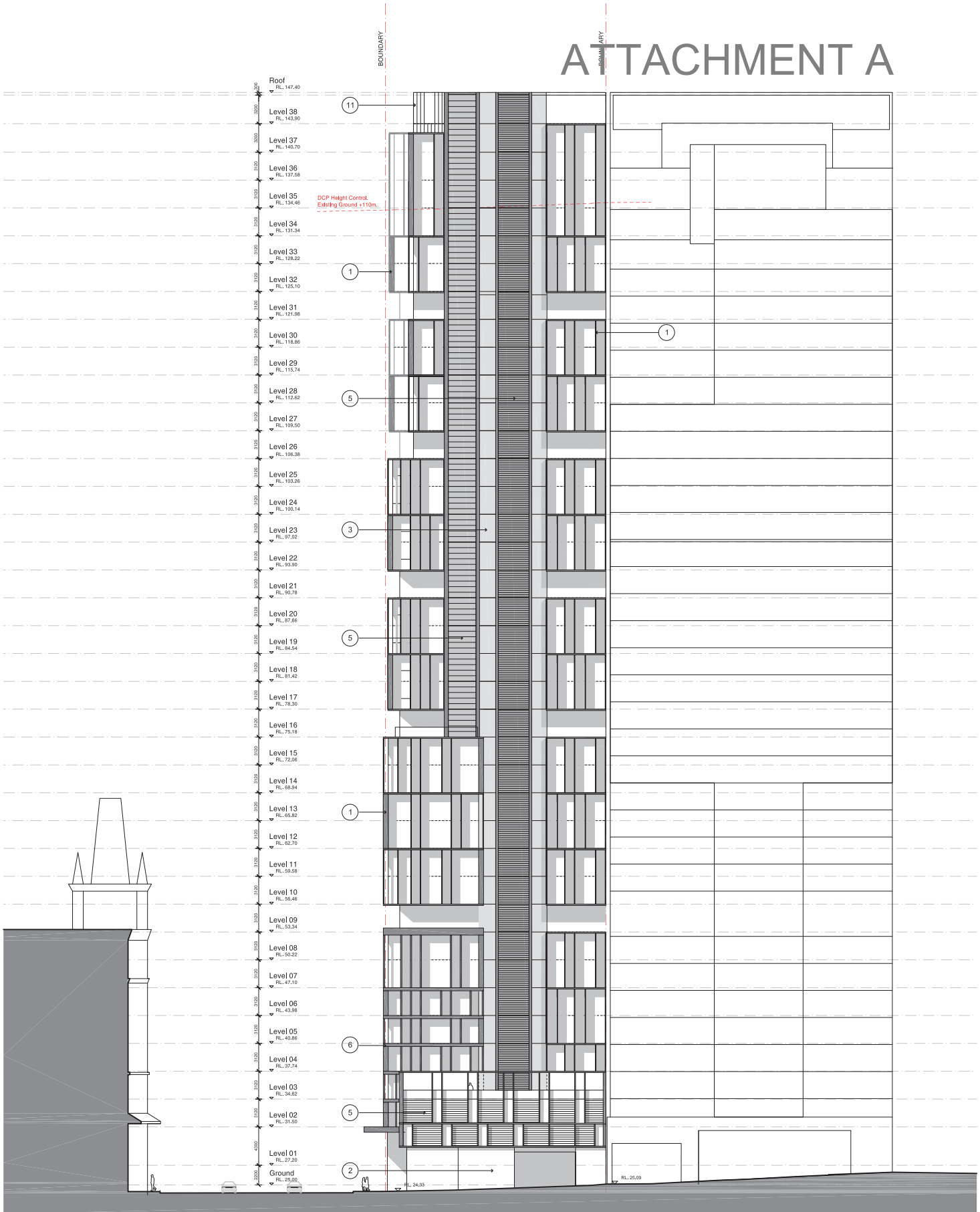
Sydney 43 Brisbane Street
Sydney NSW 2010 Australia
T 02 8354 5100 F 02 8354 5199
email syri@batesmart.com.au
http://www.batesmart.com.au

Bates Smart Architects Pty Ltd ABN 68 094 740 986

Check all dimensions and coordinates prior to commencement of any work, the purchase or ordering of any materials, fixtures, items, and before any construction and the approval of this drawing and the satisfaction of all conditions to be met in connection with any documents and all other construction documents. Do not rely on this drawing as a basis for construction or any other work. Any dimensions or other information not referred to in the drawing for detail only.

BATESSMART

ATTACHMENT A



1. Aluminium Sun Shading 2. Glazed White Brck 3. Frameless Glass / Curtain Wall Glazing 4. Glass Balustrades 5. Metal Louvers 6. Glazed White Precast Mass 7. Slitting Glass Panels / Wintergarden 8. Slitting Sash Windows 9. Structural Glass 10. Colour Backed Glass 11. Zinc Cladding

130 Elizabeth Street, Sydney
Hyde Development Nominees Pty Ltd
South Elevation
Clarke Street

Scale:	1:200 @ A1 (1:400 @ A3)
Drawn:	AL Checked AD
Project No.:	S11733
Status:	Amended Development Application
PKA Date:	3/7/2015 3:47:53 PM
PKA File:	S:\1733\1733\1733_Cover_130\Batesmart00_metallic.rvt
Drawing No.:	DA07.003[B] (Revision)

Melbourne 1 Nicholson Street
Melbourne VIC 3000 Australia
T 03 8664 6200 F 03 8664 6300
email mba@batesmart.com.au
http://www.batesmart.com.au

Sydney 43 Britzlane Street
Sydney NSW 2010 Australia
T 02 8354 5100 F 02 8354 5199
email syd@batesmart.com.au
http://www.batesmart.com.au

Bates Smart Architects Pty Ltd ABN 66 094 740 986

PRELIMINARY
NOT FOR CONSTRUCTION



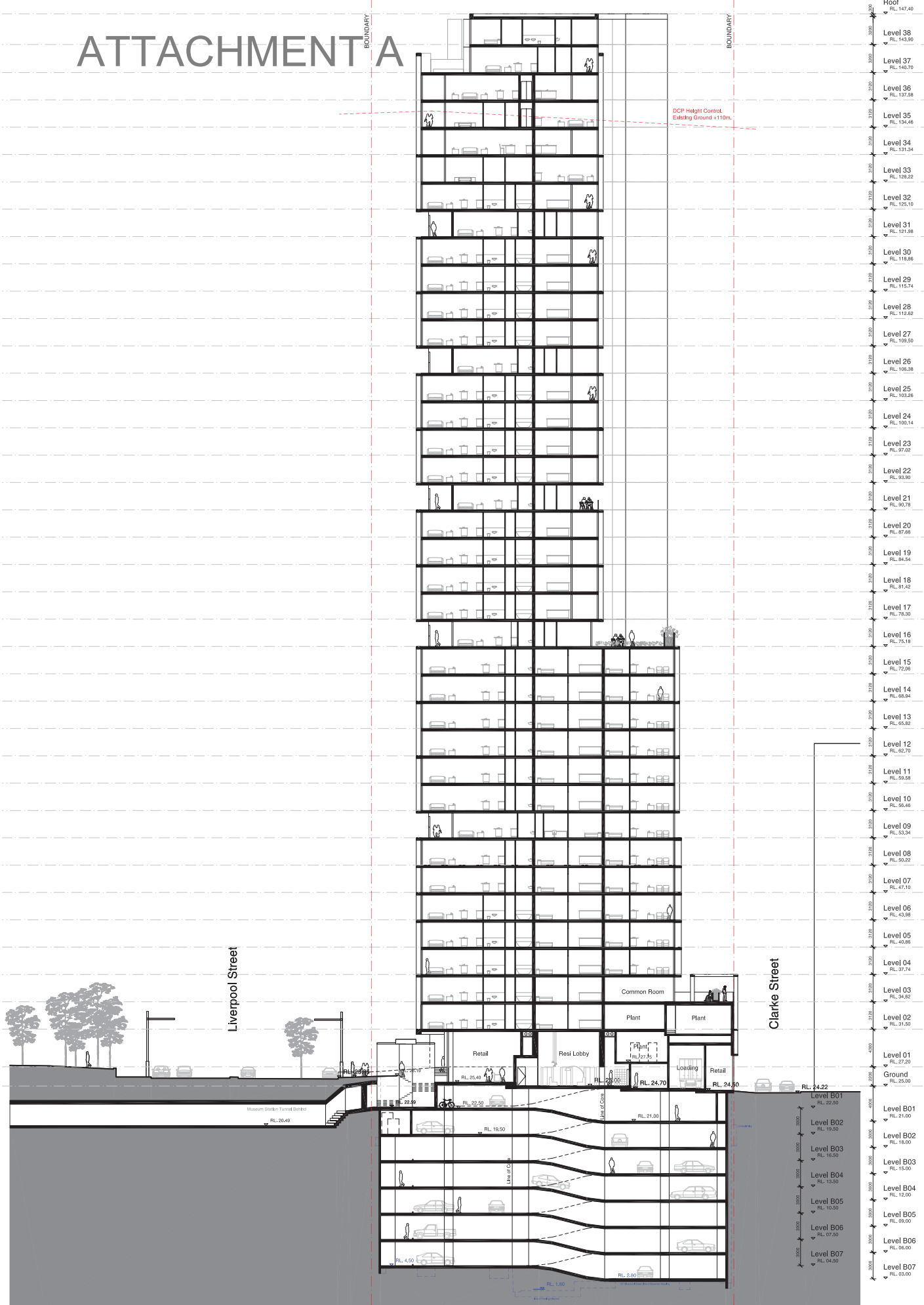
B	02.07.15	Amended DA	AL	AD
A	19.12.14	Development Application	WM	AD/DT
Revision	Date	Description	Initial	Checked

Check all dimensions and details prior to commencement of any work, the purchase or ordering of any materials, fixtures, plant, and before any excavation and the approval of this drawing and the liability of all drawings to be made in accordance with all relevant documents and other construction documents. Do not rely on this drawing for construction. All drawings are the property of Bates Smart Architects Pty Ltd and may be reproduced or distributed without prior permission from the architect.

DA07.003[B]

BATESSMART

ATTACHMENT A



PRELIMINARY
NOT FOR CONSTRUCTION



Revision	Date	Description	Initials	Checked
B	02.07.15	Amended DA	AL	AD
A	19.12.14	Development Application	KW	AD/DT

130 Elizabeth Street, Sydney
Hyde Development Nominees Pty Ltd
Section 01

Check all dimensions and site conditions prior to commencement of any work, the purchase or rental of any materials, fixtures, fittings or equipment and the preparation of any drawings and/or the construction of any structure. All drawings to be made in accordance with all relevant documents and all other conditions, documents, notices and/or guidelines issued by Council, State or Federal Government. All drawings to be referred to the architect for confirmation. All drawings may not be reproduced or distributed without prior permission from the architect.

Scale: 1:200 @ A1 (1:400 @ A3)
 Drawn: AL Checked: AD
 Project No: S11733
 Status: Amended Development Application
 Plot Date: 3/7/2015 3:47:57 PM
 Plot File: S:\11700\11700\11733\Draw_130Elizabeth00_metric.dwg
 Drawing No: **DA08.001[B]** (Revision)

Melbourne 1 Nicholson Street
Melbourne VIC 3000 Australia
T 03 8664 6200 F 03 8664 6300
email: info@bates-smart.com.au
http://www.bates-smart.com.au

Sydney 43 Brisbane Street
Sydney NSW 2010 Australia
T 02 8354 5100 F 02 8354 5199
email: syd@bates-smart.com.au
http://www.bates-smart.com.au

Bates Smart Architects Pty Ltd ABN 68 094 740 986

BATESSMART